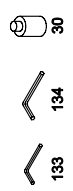
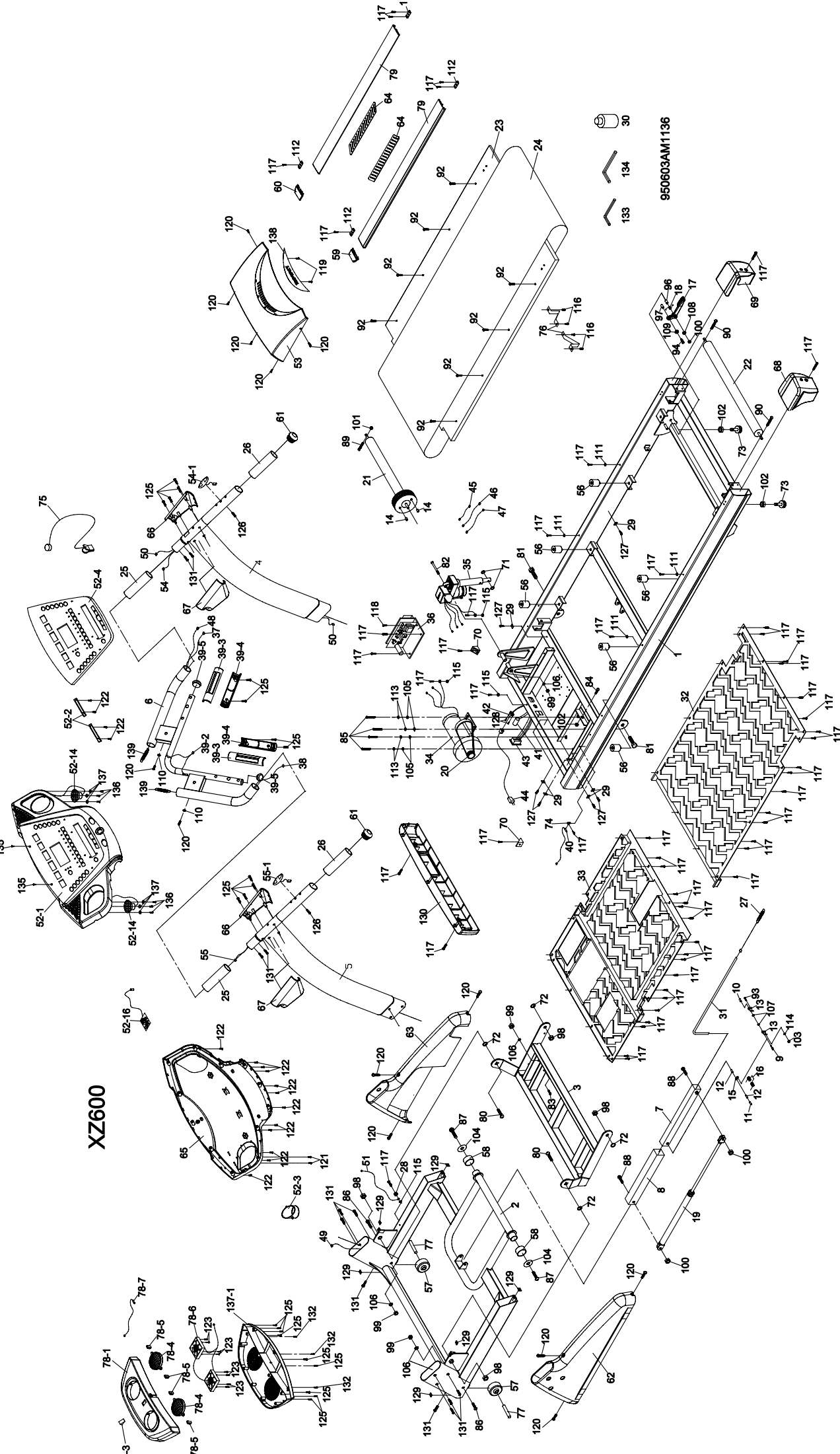


XZ600



950603AM1136

UF83 (583886) Parts List

NO.	DESCRIPTION	O'TY
1	MAIN FRAME	1
2	FRAME BASE	1
3	INCLINE BRACKET	1
4	RIGHT HANDRAIL	1
5	LEFT HANDRAIL	1
6	CONSOLE SUPPORT	1
7	INNER SLIDE	1
8	OUTER SLIDE	1
9	ϕ 5 x ϕ 8 x 25L_ CLEVIS PIN	1
10	ϕ 5 x ϕ 8 x 9L_ FASTENING BUSHING	1
11	ϕ 8 x 30L_ LINK SHAFT	1
12	ϕ 8 x ϕ 12.7 x 12L_ SHAFT BUSHING	2
13	2T_ FASTENING BRACKET	2
15	2T_ LINK	1
16	ϕ 1.0_ DUAL ROTA-SPRING	1
17	CLENCHING HANDLE ONLY (Locking Cable Assy. = 022668)	1
18	CHEENCHING ROTA-SPRING	1
19	CYLINDER - 1000N	1
20	DRIVE BELT - 240J/510J	1
21	FRONT ROLLER W/ PULLEY	1
22	REAR ROLLER	1
23	RUNNING DECK	1
24	RUNNING BELT	1
25	FOAM (A)	2
26	FOAM (B)	2
27	STEEL ROPE ROTA-SPRING	1
28	WIRE CLAMP	1
29	WIRE TIE MOUNT	6
30	LUBRICANT	1
31	STEEL ROPE (880mm)	1
32	TOP FRAME COVER	1
33	BOTTOM FRAME COVER	1
34	MOTOR-3hp YC (serial # +667) (Serial # 1-666 = 000533)	1
35	INCLINE MOTOR	1
36	CONTROLLER	1
37	800 m/m_ SPEED CABLE	1
38	800 m/m_ INCLINE CABLE	1
39	HANDPULSE	2
39~2	650 m/m_ HANDPULSE CABLE	1

39~3	HANDPULSE ASSEMBLY TOP		2
39~4	HANDPULSE ASSEMBLY BOTTOM		2
39~5	HANDLE BAR END CAP		2
40	SENSOR W/CABLE		1
41	BREAKER - 15 Amp		1
42	POWER SOCKET		1
43	ON / OFF SWITCH		1
44	POWER CORD		1
45	100m/m x 764 x 764_CONNECTING CABLE(BLACK)		1
46	300m/m x 764 x 764_CONNECTING CABLE (WHITE)		1
47	300m/m x 764 x 764_CONNECTING CABLE(BLACK)		1
48	800 m/m_COMPUTER CABLE (UPPER)		1
49	1150 m/m_COMPUTER CABLE (LOWER)		1
50	1300 m/m_COMPUTER CABLE (MIDDLE)		1
51	1000m/m_GROUND WIRE		1
52	CONSOLE W/ HANDLES		1
52~1	TOP CONSOLE COVER		1
52~2	BOOK RACK		2
52~3	BEVERAGE HOLDER		1
52~4	FACE PLATE LENS		1
52~14	SPEAKER W/ WIRES		2
52~16	SPEAKER AMP		1
53	TOP MOTOR COVER		1
54	SPEED ADJUSTMENT SWITCH W/CABLE		1
55	INCLINE ADJUSTMENT SWITCH W/CABLE		1
56	M8 x ϕ 30 x 35_CUSHION (Softer Cushions = 030060)		6
57	ϕ 75_WHEEL(A)		2
58	ϕ 62_WHEEL(B)		2
59	FOOT RAIL CAP (L)		1
60	FOOT RAIL CAP (R)		1
61	ϕ 38_BUTTON HEAD END CAP		2
62	FRAME BASE CAP (L)		1
63	FRAME BASE CAP (R)		1
64L	NON-SLIP RUBBER(L)		1
64R	NON-SLIP RUBBER(R)		1
65	BOTTOM CONSOLE COVER		1
66	HANDGRIP SIDE CAP (R)		2
67	HANDGRIP SIDE CAP (L)		2
68	REAR ADJUSTMENT BASE (L)		1
69	REAR ADJUSTMENT BASE (R)		1
70	MOTOR COVER ANCHOR(D)		2

71	ϕ 10 x ϕ 24 x 3T_NYLON WASHER (A)		2
72	ϕ 50 x ϕ 13 x 3T_NYLON WASHER (B)		4
73	ϕ 30 x 3/8" _FOOT PAD		2
74	SENSOR RACK		1
75	SAFETY KEY		1
76	BELT GUIDE		2
77	ϕ 14 x ϕ 10 x 35 _WHEEL SLEEVE		2
78	~10 MAGNET (SLUG IS SENT WITH MAGNET)		2
79	FOOT RAIL		2
80	1/2" x 1-1/4" _CARRIAGE BOLT		2
81	1/2" x 1" _HEX HEAD SCREW		2
82	3/8" x 4-1/2" _SOCKET HEAD CAP SCREW		1
83	3/8" x 3-3/4" _BUTTON HEAD SOCKET SCREW		1
84	3/8" x 1-1/2" _HEX HEAD SCREW		1
85	3/8" x 1" _HEX HEAD SCREW		4
86	3/8" x 2" _FLAT HEAD SOCKET SCREW		2
87	5/16" x 1" _BUTTON HEAD SOCKET SCREW		2
88	5/16" x 2-3/4" _BUTTON HEAD SOCKET SCREW		2
89	M8 x 60m/m _HEX HEAD SCREW		1
90	M8 x 80m/m _SOCKET HEAD CAP SCREW		2
92	M8 x 35m/m _FLAT HEAD COUNTERSINK SCREW		8
93	M3 x 10m/m _PHILLIPS HEAD SCREW		1
94	M5 x 15m/m _PHILLIPS HEAD SCREW		1
96	5/16" x 42 m/m _PHILLIPS HEAD SCREW		1
97	M5 _NYLON NUT		1
98	1/2" x 8T_NYLON NUT		4
99	3/8" x 7T_NYLON NUT		4
100	5/16" x 6T_NYLON NUT		3
101	M8x 8T_NYLON NUT		1
102	3/8" x 6.5T_NUT		3
103	M3_NUT		1
104	ϕ 35 x ϕ 5/16" x 1.5T_FLAT WASHER		2
105	ϕ 25 x ϕ 10 x 1.5T_FLAT WASHER		4
106	ϕ 19 x ϕ 10 x 1.5T_FLAT WASHER		4
107	ϕ 5 x ϕ 10 x 1.0T_FLAT WASHER		2
108	ϕ 5/16" x ϕ 18 x 1.5T_FLAT WASHER		1
109	ϕ 5 x ϕ 12 x 1.0T_FLAT WASHER		1
110	ϕ 5 x ϕ 15 x 1.0T_FLAT WASHER		2
111	ϕ 6 x ϕ 23 x ϕ 13 x 5.5T x 3T_NYLON DISHED WASHER		4
112	ϕ 6.5 x 25 x 50 x 1.5Tx2.5H_CONCAVE WASHER		4
113	ϕ 10 _SPRING WASHER		4

114	M3_SPRING WASHER		1
115	M5_RAISED WASHER		4
116	4x12m/m_SELF TAPPING SCREW		4
117	5x16m/m_TAPPING SCREW - Black		59
118	5x19m/m_TAPPING SCREW		1
119	3.5 x 6 m/m_SELF TAPPING SCREW		2
120	5 x 16m/m_TAPPING SCREW - Black		13
121	3 x10m/m_SELF TAPPING SCREW		2
122	3.5 x 12 m/m_SELF TAPPING SCREW		16
124	3x10 m/m_TAPPING SCREW		12
125	4x38m/m_SELF TAPPING SCREW		2
126	3.5 x 16 m/m_TAPPING SCREW		6
127	3 x 10 m/m_SELF TAPPING SCREW		2
128	M5_IRON PLATE NUT		6
130	5/16" x 1/2" BUTTON HEAD SOCKET SCREW		12
131	COMBINATION M5 ALLEN WRENCH & PHILLIPS HEAD SCREW DRIVER		1
132	M6 ALLEN WRENCH		1
133	3 x 10 m/m_SELF TAPPING SCREW		2
134	3x 8m/m_SELF TAPPING SCREW		6
135	PLASTIC WASHER		6
136	FRONT MOTOR COVER		1
137	TOP MOTOR COVER PLATE		1
138	0.8T_SPRING FOR CONSOLE		2
	HARDWARE KIT	022680	1
	DECAL (CONSOLE)	000960	1
	DECAL (SIDE)	000929	2