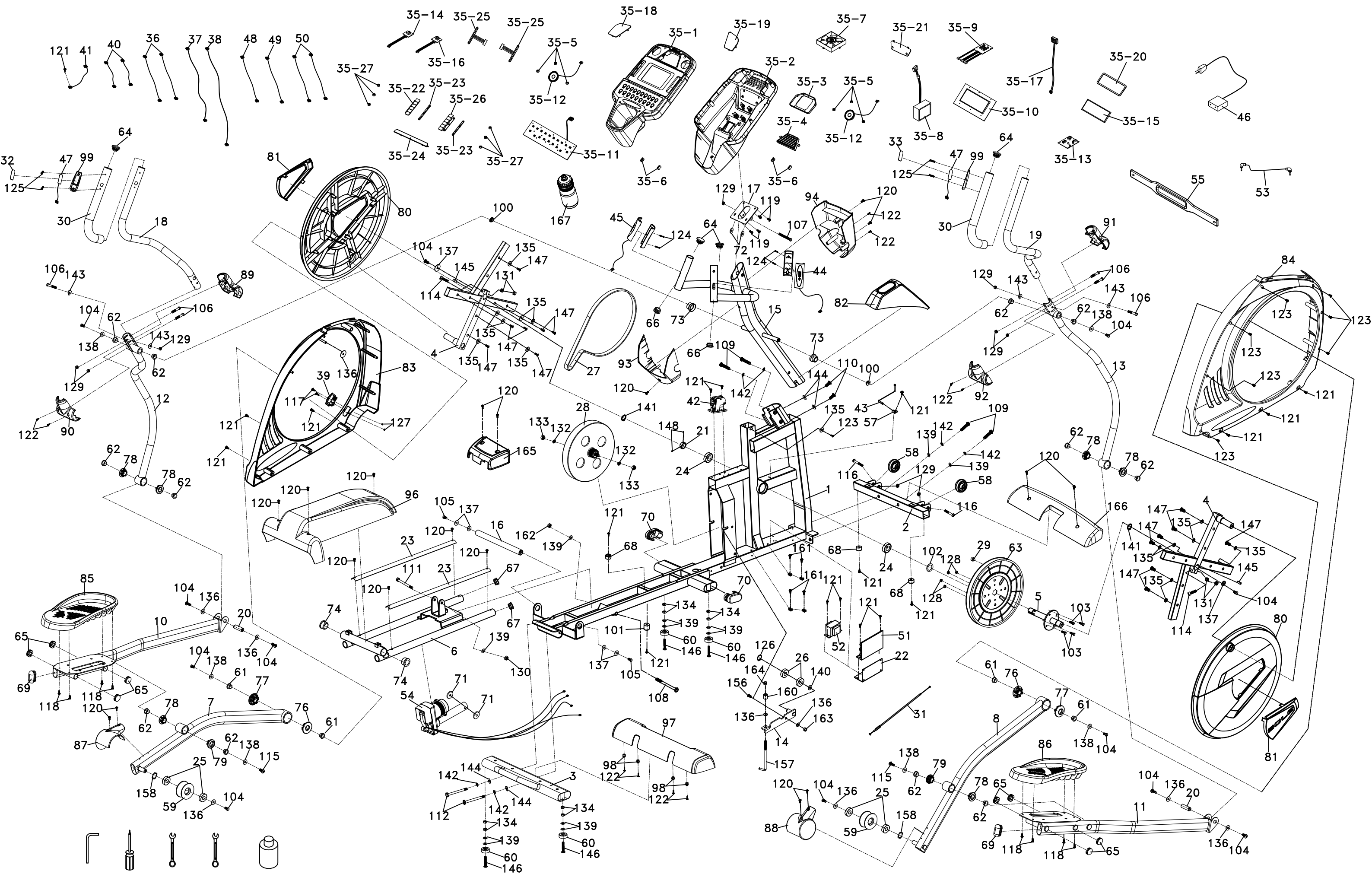


SE578SD



20130522

SOLE - E25-525013 - PARTS LIST

Dyaco #	Material #	Detailed Descriptions	QTY
2	BB070097-Q2	Front Stabilizer Bar	1
3	BB070093-Q2	Inclinable Rail Assembly	1
4	BB040013-Q2	Cross Bar	2
5	C140017	Crank Axle	1
6	RBB030044-Q2	Rear Rail Assembly	1
7	RBB050164-Q2	Pedal Arm (L) Assembly	1
8	RBB050165-Q2	Pedal Arm (R) Assembly	1
10	RBB050166-Q2	Connecting Arm (L) Assembly	1
11	RBB050167-Q2	Connecting Arm (R) Assembly	1
12	RBB060105-Q2	Lower Handle Bar (L) Assembly	1
13	RBB060106-Q2	Lower Handle Bar (R)Assembly	1
14	C145001-Q2	Idler Wheel Assembly	1
15	RBB020083-Q2	Console Mast Assembly	1
16	BB070095	Locking Tube Assembly	1
17	BB080004-Q2	Console Holder Assembly	1
18	RTT040454-Q2	Swing Arm (L) Assembly	1
19	RTT040456-Q2	Swing Arm (R)Assembly	1
20	C050048-Z4	Rod End Shaft(Ø17×Ø52×5/16")	2
21	C110001-Z3	Axle Stopper(Ø32×10mm)	1
22	B060015-Q2	Control Fixing Plate	1
23	M030005-Z0	Aluminum Rail(2.0T×625mm)	2
24	K056005	6005_Bearing	2
25	K056003	6003_Bearing	4
26	K056203	6203_Bearing	2
27	N010002	Drive Belt(8J500)	1
28	K500042	Flywheel(Ø270×Ø40×10J)	1
29	N040002	Magnet(Ø15×7T)	1
30	L120002-A1	Handgrip Foam(Ø31.8×3T×420mm)	2
31	K020046	Steel Cable	1
32	I080497-A2	Handgrip Resistance Label (INCLINE)	1
33	I080497-A1	Handgrip Resistance Label (LEVEL)	1
35	RZ5YE001B-20	Console Assembly	1
35~1	P020350B-MA-AV	Console Top Cover	1
35~2	P020326A-A1	Console Bottom Cover	1
35~3	P250002-A1	Fan Fixing Plate	1
35~4	P250001-A1	Deflector Fan Grill	1
35~5	P060223-A1	Speaker Grill Anchor	6
35~6	P060060-A1	Fan Grill Anchor	4
35~7	F040100	400m/m_Fan Assembly(RDH8025S,White)	1
35~8	D020501	300m/m_W/Receiver, HR(YJ-8200)	1
35~9	D022189	Interface Board(YJ-51601-K5)	1
35~10	D022207	Console Display Board(YE001(YJ-59500)	1
35~11	D022193	Main Key Board(YJ-59510-K1)	1
35~12	F050150	250m/m_Speaker W/Cable	2
35~13	F110204	Amplifier Controller(YJ-8509-1)	1
35~14	D020533	300m/m_Sound Board W/Cable (Red)(YJ-8510-2)	1
35~15	P020269	6.5"-LCD Transparent Piece(142.6×93.6×2T)	1
35~16	D020532	300m/m_Sound Board W/Cable (White)(YJ-8510-1)	1
35~17	E060503	250m/m_Amplifier Cable	1

35~18	B130091-Z3	Speaker Iron Net (L)	1
35~19	B130092-Z3	Speaker Iron Net (R)	1
35~20	P060443	6.5"Water-resist Rubber(143×94×1.5T)	1
35~21	P060529-MA	LOGO Plate	1
35~22	P170069-AC-BO	Key Fast Board (L)	1
35~23	P170070-A1	Key Fast Board Foam	2
35~24	P240008-JH	Book Rack	1
35~25	F090405	Console Resistance Button W/Cable	2
35~26	P170069-AC-BP	Key Fast Board (R)	1
35~27	P060183-A1	Speaker Grill Anchor(Ø12×5.5T)	6
36	E010061	300m/m_Connecting Wire, Controller(Red)	2
37	E020105	850m/m_Computer Cable	1
38	E020351	1550m/m_Computer Cable	1
39	F030053	AC Electronic Module	1
40	E010081	80m/m_Connecting Wire (White)	2
41	E040007	200m/m_Ground Wire	1
42	D020601	Gear Motor(YJ-9900)	1
43	F030165	400m/m_Sensor W/Cable	1
44	F090235	850m/m_Handpulse W/Cable Assembly (White)	1
45	F090236	850m/m_Handpulse W/Cable Assembly (Red)	1
46	E060001	Power Cord	1
47	F090401	Resistance Button W/Cable	2
48	E050101	450m/m_Handle Wire (Upper), Resistance	1
49	E050102	450m/m_Handle Wire (Upper), Incline	1
50	E050104	900m/m_Handle Wire (Lower), Resistance/Incline	2
51	D020604	Incline Controller(YJ-2001L)	1
52	D022035	Incline Adaptor(08007EP,120v)	1
53	E090001	400m/m_Audio Cable	1
54	G110085	Incline Motor(JS15-A,30128L,115V,1/15HP,1450mm(250),65mm)	1
55	F090001-A3	Chest Strap	1
57	P060022A-A1	Sensor Rack	1
58	P050015-A1	Ø62_Transportation Wheel	2
59	RP050055A-PU	Slide Wheel , Urethane-(Ø78PU) Assembly	1
60	P060256-A1	Ø35 × 10m/m_Rubber Foot	4
61	P060440	WFM-1719-12_Bushing	4
62	P060451	J4FM-1719-09_Bushing	12
63	P060090-A1	Ø330_Drive Pulley	1
64	P060253-A1	Ø32(1.8T)_Button Head Plug	4
65	P040136-A1	Ø25.4 × 2.0T_Round Cap	8
66	P040052-A1	Ø32 × 2.0T_Round Cap	2
67	P040050-A1	32 × 2.5T_Round Cap	2
68	P060252	Ø25 × Ø25 × 15T_Rubber Foot Pad	3
69	P040139-A1	Ø30 × 60_Oval End Cap	2
70	P060112-A1	Ø40 × Ø80_Oval End Cap	2
71	P060277	3/8" × 35 × 5T_Nylon Washer	2
72	P060278	5/16" × 25 × 3T_Nylon Washer	2
73	P060056-A1	Ø30 × 19m/m_Mast Bushing	2
74	P060029-A1	Ø38 × Ø34 × Ø26 × 4 + 16T_Bushing	2
76	P270042	Ø56 × Ø19 × 15L_Bushing(Flat)	2
77	P270043	Ø56 × Ø19 × 15L_Bushing(Curved)	2
78	P270044	Ø42 × Ø19 × 15L_Bushing(Flat)	6
79	P270045	Ø42 × Ø19 × 15L_Bushing(Curved)	2

80	P110012-I5- P110012-IJ	Round Disk	2
81	P110013-LI- P110013-LY	Round Disk Cover	2
82	P100068-A1	Console Mast Cover	1
83	RP100066A-A1	Side Case (L)	1
84	RP100067-A1	Side Case (R)	1
85	P130015B-A1	Pedal (L)	1
86	P130016B-A1	Pedal (R)	1
87	P200007-A1	Slide Wheel Cover (L)	1
88	P200008-A1	Slide Wheel Cover (R)	1
89	P180104-A1	Front Handle Bar Cover (L)	1
90	P180105-A1	Rear Handle Bar Cover (L)	1
91	P180106-A1	Front Handle Bar Cover (R)	1
92	P180107-A1	Rear Handle Bar Cover (R)	1
93	P180087-A1	Console Chin Cover (Front)	1
94	P180110-A1	Console Chin Cover (Rear)	1
96	P190040-A1	Incline Cover	1
97	P190041-A1	Rear Bar Cover	1
98	P060549	End Cap Stopper	4
99	P161002	Handle Switch Bracket	2
100	P040036-A1	Switch Wire Cap	2
101	P060279-A1	Ø25 × 25m/m_Rubber Foot Pad	1
102	P060273-A1	35 × 25.5 × 5T_Spacer Bushing	1
103	J010002-ZZ	1/4" × 3/4" _Hex Head Bolt	4
104	J010503-YQ	5/16" × 15m/m _Hex Head Bolt	12
105	J010504-YN	5/16" × 25m/m _Hex Head Bolt	2
106	J010507A-Y3	5/16" × 1-3/4" _Hex Head Bolt	6
107	J010510A-Y3	5/16" × 2-1/2" _Hex Head Bolt	1
108	J013513L-Y1	M10 × 130m/m _Hex Head Bolt	1
109	J011009-Z1	3/8" × 2-1/4" _Hex Head Bolt	4
110	J011002-ZR	3/8" × 3/4" _Hex Head Bolt	2
111	J011010A-Y1	3/8" × 2-1/2" _Hex Head Bolt	1
112	J011015-Y3	3/8" × 3-3/4" _Hex Head Bolt	2
114	J033008G-Y3	M8 × 1.25 × 40m/m _Socket Head Cap Bolt	2
115	J020520-Y3	5/16" × 15m/m _Button Head Socket Bolt	2
116	J020508A-Z1	5/16" × 2" _Button Head Socket Bolt	2
117	J094502-Y3	M4 × 12m/m _Phillips Head Screw	2
118	J092001-YN	M5 × 10m/m _Phillips Head Screw	8
119	J092001-Y3	M5 × 10m/m _Phillips Head Screw	4
120	J092003-Y3	M5 × 15m/m _Phillips Head Screw	18
121	J367114-Y3	5 × 19m/m _Tapping Screw	18
122	J396804-Y3	Ø3.5 × 12m/m _Sheet Metal Screw	10
123	J396805-Y3	Ø3.5 × 16m/m _Sheet Metal Screw	8
124	J517007-Y3	Ø3 × 20m/m _Tapping Screw	4
125	J552004-Y3	M5 × 20m/m _Flat Head Socket Screw	4
126	J310002-Z4	Ø17_C Ring	1
127	J139411-Y3	M4 × 5T _Nyloc Nut	2
128	J139461-Z1	1/4" × 8T _Nyloc Nut	4
129	J139062F-Y3	5/16" × 7T _Nyloc Nut	9
130	J139011-Y3	3/8" × 7T _Nyloc Nut	1
131	J129272-ZS	M8 × 6.3T _Nut	4

132	J129031-Z1	3/8" -UNF26 × 4T_Nut	2
133	J160028-Z1	3/8" -UNF26 × 11T_Nut	2
134	J129021-Y3	3/8" × 7T_Nut	8
135	J210012-Y3	1/4" × 19m/m_Flat Washer	15
136	J210009-Y3	5/16" × 23 × 1.5T_Flat Washer	9
137	J210014-Y3	5/16" × 35 × 2.0T_Flat Washer	6
138	J210042-Y3	Ø8.5 × 26 × 2.0T_Flat Washer	6
139	J210003-Y3	3/8" × 19 × 1.5T_Flat Washer	12
140	J210011-Z1	Ø17 × 23.5 × 1T_Flat Washer	1
141	J310001-Z4	Ø25_C Ring	2
142	J260003-Y3	3/8" × 2T_Split Washer	6
143	J220001-Y3	5/16" × 23 × 1.5T_Curved Washer	4
144	J220002-Y3	3/8" × 23 × 2T_Curved Washer	4
145	J320009-Z1	Woodruff Key	2
146	J341007-Y3	3/8" × 1-3/4" Flat Head Socket Bolt	4
147	J377105-Z1	5 × 16m/m_Tapping Screw	14
148	J080005-YR	M5 × 5m/m_Slotted Set Screw	2
149	J330009-Z1	M5_L Allen Wrench	1
150	J330008	Phillips Head Screw Driver	1
151	J330025-Z1	13/14m/m_Wrench	1
152	J330026-Z1	12/14m/m_Wrench	1
156	J073004-Z1	M8 × 20m/m_Carriage Bolt	1
157	J083012K-Z1	M8 × 170m/m_J Bolt	1
158	J250002-Z4	Ø17_Wave Washer	2
160	C080008-Z1	Ø11.9 × Ø8.5 × 15m/m_Rod End Sleeve	1
161	J536805-Z1	3.5 × 16m/m_Tapping Screw	4
162	J139361F-Z1	M10 × 8T_Nyloc Nut	1
163	J139261-ZF	M8 × 7T_Nyloc Nut	1
164	J139262-Z4	M8 × 9T_Nyloc Nut	1
165	P190008-A1	Incline Bottom Cover	1
166	P190001-A1	Front Stabilizer Cover	1
167	N030001-A5	Drink Bottle(CSB-501,SOLE LOGO)	1
X	J99B0087-02	Guest Assembly Screws	1
X	I030172	Console overlay (red)	1