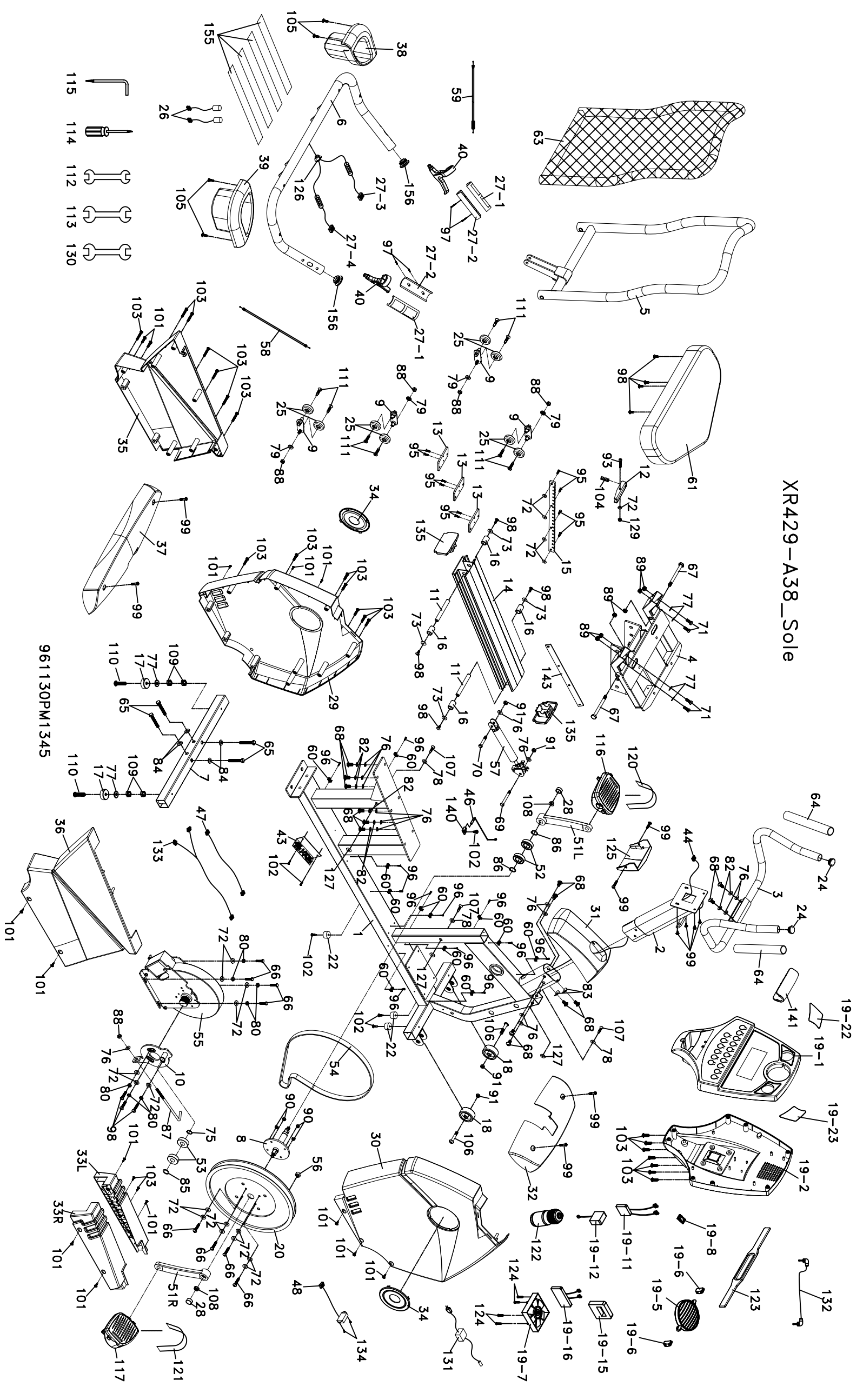


XR429-A38_Sole



961130PM1345

XR429-A38 (BR86) Part List_Sole

| Parts # | Description | Qty |
|---------|--|-----|
| 1 | Main Frame | 1 |
| 2 | Console Mast | 1 |
| 3 | Handle Bar, Front | 1 |
| 4 | Seat Carriage | 1 |
| 5 | Seat Back Frame | 1 |
| 6 | Handle Bar | 1 |
| 7 | Rear Stabilizer | 1 |
| 8 | Drive Pulley Axle | 1 |
| 9 | Seat Wheel Adjustment Plate | 4 |
| 10 | Idler Arm (no bearings) | 1 |
| 11 | Seat Stop Axle | 2 |
| 12 | Seat Position Latch | 1 |
| 13 | Backing Plate | 3 |
| 14 | Aluminum Axle | 1 |
| 15 | Seat Position Index Plate | 1 |
| 16 | Seat Stop | 4 |
| 17 | Cushion Foot Pad-Leveling Foot | 2 |
| 18 | Transportation Wheel | 2 |
| 19 | Console Assembly | 1 |
| 19-1 | Top Console Cover | 1 |
| 19-2 | Bottom Console Cover | 1 |
| 19-5 | Deflector Fan Grill | 1 |
| 19-6 | Fan Grill Anchor | 2 |
| 19-7 | Fan | 1 |
| 19-8 | Fan Power Switch | 1 |
| 19-11 | Interface Daughter Board | 1 |
| 19-12 | Receiver, HR | 1 |
| 19-15 | Console PCB Board | 1 |
| 19-16 | Console Key Board | 1 |
| 19-22 | Speaker Iron Net (L) | 1 |
| 19-23 | Speaker Iron Net (R) | 1 |
| 20 | Drive Pulley | 1 |
| 22 | φ25x15 Foot Pad | 3 |
| 24 | φ25.4 Button Head End Cap | 2 |
| 25 | φ38 Transportation Wheel, Aluminum Axle | 8 |
| 26 | 300mm Handpulse Wire, Coiled | 2 |
| 27 | Handpulse W/Cable Assembly | 2 |
| 27-1 | Handpulse Assembly Top | 2 |
| 27-2 | Handpulse Assembly Bottom | 2 |
| 27-3 | 750mm Handpulse Wire A | 1 |
| 27-4 | 950mm Handpulse Wire B | 1 |
| 28 | Crank Arm End Cap | 2 |
| 29 | Front Chain Cover (L) | 1 |
| 30 | Front Chain Cover (R) | 1 |
| 31 | Console Mast Cover | 1 |
| 32 | Front Stabilizer Cover | 1 |
| 33L | Incline Bottom Cover (L) | 1 |
| 33R | Incline Bottom Cover (R) | 1 |
| 34 | Round Disk Cover | 2 |
| 35 | Rear Chain Cover (L) | 1 |
| 36 | Rear Chain Cover (R) | 1 |
| 37 | Rear Stabilizer Cover | 1 |
| 38 | Beverage Holder (R) | 1 |
| 39 | Beverage Holder (L) | 1 |
| 40 | Release Lever | 2 |
| 43 | Controller | 1 |
| 44 | Computer Cable (Upper) | 1 |
| 46 | Sensor W/Cable | 1 |
| 47 | Wire Brake Coil Harness | 1 |
| 48 | AC Wire Assembly | 1 |
| 51L | Crank (L) | 1 |
| 51R | Crank (R) | 1 |
| 52 | Bearing, Drive Pulley | 2 |
| 53 | Bearing for Idler Arm | 2 |
| 54 | Belt | 1 |
| 55 | Generator/Brake | 1 |
| 56 | Magnet | 1 |
| 57 | Gas Cylinder | 1 |
| 58 | Seat Recline Release Cable | 1 |
| 59 | Seat Fore/Aft Release Cable | 1 |
| 60 | Wire Tie Mount | 12 |
| 61 | Seat Bottom Cushion | 1 |
| 63 | Mesh Seat Back | 1 |
| 64 | Foam, Front Handle Bar | 2 |
| 65 | 3/8" x 2- 1/4" Hex Head Screw | 4 |
| 66 | 1/4" x 3/4" Hex Head Screw | 8 |
| 67 | 3/8" x4" Hex Head Screw | 2 |
| 68 | 5/16" x15 Hex Head Screw | 14 |
| 69 | 5/16" x2- 1/2" Hex Head Screw | 1 |
| 70 | 5/16" x1- 3/4" Hex Head Screw | 1 |
| 71 | 3/8"×1-3/4" Hex Head Screw | 4 |
| 72 | 1/4"x13x1T Flat Washer | 20 |
| 73 | 1/4"x19x1.5T Flat Washer | 4 |
| 75 | φ17x 23.5 x 1T Flat Washer | 1 |
| 76 | 5/16" x 19 x 1.5T Flat Washer | 15 |
| 77 | 3/8" x 19 x 1.5T Flat Washer | 6 |
| 78 | φ5x16x1.5T Flat Washer | 3 |
| 79 | φ8xφ18x3T Knurled Lock Washer | 4 |
| 80 | φ1/4" Split Washer | 7 |
| 82 | φ8x1.5T Split Washer | 8 |
| 83 | 5/16" x20x 1.5T Curved Washer | 2 |
| 84 | 3/8" x 25 x 1.5T Flat Washer | 4 |
| 85 | φ17 C Ring | 1 |
| 86 | φ20 C Ring | 2 |
| 87 | J Bolt | 1 |
| 88 | M8 x 7T Nyloc Nut | 5 |
| 89 | 3/8"x 7T Nyloc Nut | 6 |
| 90 | 1/4" x 5T Nyloc Nut | 4 |
| 91 | 5/16" x 6T Nyloc Nut | 4 |
| 93 | M6 x40mm Socket Head Cap Screw | 1 |
| 95 | M5x15 Flat Head Socket Screw | 10 |
| 96 | φ3.5x16 Tapping Screw | 12 |
| 97 | φ3x20 Tapping Screw | 4 |
| 98 | M6x15 Phillips Head Screw | 11 |
| 99 | M5x12 Phillips Head Screw | 10 |
| 101 | 5x16 Tapping Screw | 14 |
| 102 | 5x19 Tapping Screw | 6 |
| 103 | φ3.5x12 Self Tapping Screw | 23 |
| 104 | Seat Release Spring | 1 |
| 105 | φ4x16 Self Tapping Screw | 4 |
| 106 | 5/16" x1- 3/4" Button Head Socket Screw | 2 |
| 107 | φ3.5x20 Self Tapping Screw | 3 |
| 108 | M10x1.0 Nut | 2 |
| 109 | 3/8" x 7T Nut | 4 |
| 110 | 3/8" x 2" Thumb Head Socket Screw | 2 |
| 111 | M5x10.φ14×2T Thumb Head Socket Screw | 8 |
| 112 | 12/14mm Wrench | 1 |
| 113 | 13/15mm Wrench | 1 |
| 114 | Phillips Head Screw Driver | 1 |
| 115 | Combination M5 Allen Wrench & Phillips Head Screw Driver | 1 |
| 116 | Pedal (L) | 1 |
| 117 | Pedal (R) | 1 |
| 120 | Pedal Strap (L) | 1 |
| 121 | Pedal Strap (R) | 1 |
| 122 | Drink Bottle | 1 |
| 123 | Chest Strap | 1 |
| 124 | φ3.5x32 m/m Self Tapping Screw | 4 |
| 125 | Plastic Seat Carriage Cover | 1 |
| 126 | HGP Wire Grommet | 1 |
| 127 | 5/16"×16×1T Flat Washer | 3 |
| 129 | M6 Nyloc Nut | 1 |
| 130 | 13/14mm Wrench | 1 |
| 131 | AC Transformer | 1 |
| 132 | Audio Cable | 1 |
| 133 | 2050mm Handpulse Wires (Top) | 1 |
| 134 | M3×10 Phillips Head Screw | 2 |
| 135 | Aluminum Axle End Cap | 2 |
| 140 | Sensor Rack | 1 |
| 141 | Handle Bar Cover | 1 |
| 143 | Seat Position Index Plate, Fixing Plate | 1 |
| 155 | Velcro Tape | 4 |
| 156 | φ32(1.8T) Button Head End Cap | 2 |